

Vacancy at Global Mentors Group

# Client Director



**TOP OF MINDS**  
Executive Search



## Requirements

- Over 10 years of experience
- In executive search or senior corporate leadership
- With an established executive network in large corporations, particularly in the Benelux
- Extensive experience engaging with C-suite leaders
- Proven business development and sales skills
- Highly self-motivated and autonomous
- Fluent in English

 **Netherlands**

**As a global leader in CEO and board-level mentoring, Global Mentors Group supports senior executives through personalized mentorship from former Chairs and CEOs. The Client Director works alongside the Senior Partner to drive strategic growth in the Benelux and Spain. Leveraging an established executive network and strong commercial insight, this professional strengthens the company's position among the region's most influential organizations.**

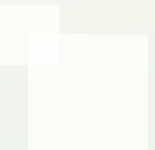
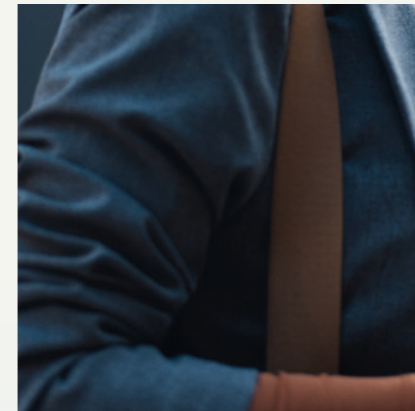
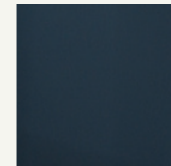
# About Global Mentors Group

**Global Mentors Group (GMG) provides mentor-led development for senior executives, including Chairs, CEOs, and C-suite leaders preparing for enterprise roles. The organization strengthens leadership effectiveness, supports high-stakes transitions, and helps leaders navigate complex board and stakeholder environments.**

GMG brings together a community of over two hundred former international business leaders with expertise as Chairs, CEOs, and board members of Fortune 500 companies. The network draws on the heritage of three mentoring businesses with over twenty-five years of combined experience: Chair Mentors International, Merryck, and Board Advisory Partners. Its approach is informed by decades of mentoring senior executives through sensitive and high-profile leadership challenges. Mentors are distinguished former CEOs, Chairs and senior business leaders who provide impartial counsel based on first-hand experience leading large and complex organizations. Their emphasis is on supporting the individual leader rather than the organization as a whole.

Mentoring engagements are designed around each leader's context, objectives, and development priorities. Mentors are matched for relevant experience, leadership style, and interpersonal fit to ensure strong relationships. Some leaders work with multiple mentors to gain different perspectives, and many of these relationships continue across several phases of their careers.

Today, GMG supports senior leaders in listed and privately held companies worldwide. Dedicated Partners operate across Europe, North America, the Middle East, Asia, and Australasia, ensuring culturally relevant mentoring. This global footprint enables Chairs, senior executives and board members to access mentor-led support that aligns with local expectations and international leadership demands.







# Client Director

**The Client Director supports the Senior Partner in expanding GMG's presence in the Benelux and Spain through business development, strategic relationship building, and advisory engagement with senior corporate leaders. Leveraging a strong executive network, the Client Director engages with Chairs, CEOs, CHROs and other senior stakeholders to understand client needs and position GMG's solutions. Their gravitas enables them to operate at the highest levels of leadership and convert trusted relationships into commercial mandates aligned with GMG's mentoring services.**

Working closely with the Senior Partner for Benelux and Spain, the Client Director manages and grows GMG's client relationships, driving new commercial opportunities and sustaining multi-year engagements. They help shape account strategies, outreach approaches and client delivery, with long-term relationships fostered to generate repeat business and referrals. Although the primary focus is on Benelux and Spain, the role may also support cross-border business development to strengthen GMG's global footprint.

This is a role for a professional that operates effectively in a performance-driven and entrepreneurial environment supported by private-equity investment. GMG's culture emphasizes autonomy, initiative, and accountable commercial ownership. It is well suited to professionals who excel at independently building relationships and driving business growth. Directors and Partners are encouraged to develop their own networks of influence, supported by an experienced and globally connected community of senior mentors. Together, they contribute to GMG's impact on leadership performance and the effectiveness of top executives worldwide.



## Interested?

Global Mentors Group is working with Top of Minds to fill this vacancy.  
To express your interest, please contact Vivian Linker at  
[vivian.linker@topofminds.com](mailto:vivian.linker@topofminds.com).



**TOP OF MINDS**  
Executive Search