

VACANCY

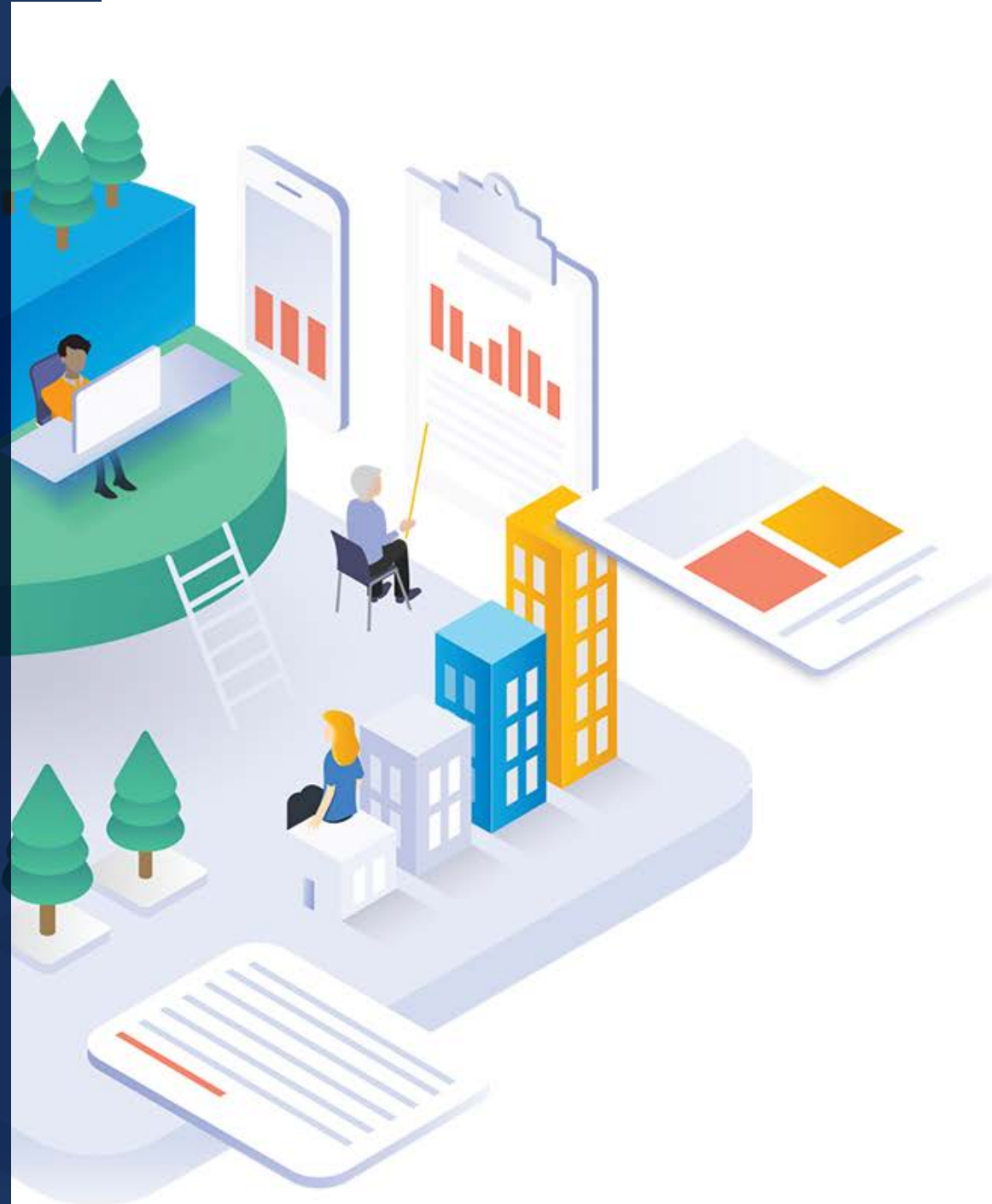
Chief Executive Officer

REQUIREMENTS

- At least 6 years of work experience
- Experience building and deploying a technically driven platform product
- Affinity with sustainability, environment, social & governance (ESG)
- Enterprising, resourceful, and creative
- Knowledge of social media and modern marketing

 Amsterdam  Minimum of 10 years' experience

Every's ambition is to help all SMEs improve their Environmental, Social and Governance performance. The company's technology uses globally accepted standards to measure a company's ESG impact, providing reporting for stakeholders such as owners, customers, employees and financiers. The platform provides tools, education, and practical resources like policy documents to guide SMEs through practical improvement changes. This role is perfect for someone who knows how to turn a platform full of potential into a successful business and feel passionate about sustainability and helping SMEs tackle their footprint.



Eevery

Whilst large companies are increasingly conforming to ESG reporting and improvements, SMEs are behind the curve. This is not because they are uninterested in sustainability issues, but rather because they have lacked the information and tools relevant to their size and resources. This is at a time when they are under increasing pressure from stakeholders (including large customers) to demonstrate their ESG credentials.

The Eevery technology provides the solution to this problem. With a single subscription, SMEs will be able to measure their ESG footprint in a way that is relevant to their size and is based on objective and internationally recognized methodologies. They can report the output to their stakeholders and take practical steps to improve.

The technology at the heart of Eevery has been developed by Caple, a pan-European fintech that works with global financial institutions to lend to SMEs. The technology is being spun out into a new standalone company. The company is looking for a founding Chief Executive Officer to build a first-class team, take the product to market, and scale internationally.



Chief Executive Officer (CEO)

The CEO will take the lead in making Eevery's ambitious dreams a reality. The company is moving from concept to execution. The CEO will build a solid foundation for the company, in a role that encompasses entrepreneurship, strategy, technology, marketing, sales, and HR.

The platform is ready to enter the market. The CEO will drive the rollout and manage the technical issues. Eevery's concept is highly scalable. The CEO will put the company on the map with a solid marketing and sales strategy. The company will establish a base in the Netherlands and the United Kingdom before expanding internationally.

The CEO will be the first employee, and they will build a strong team at Eevery, hiring other team members (e.g., a COO and CFO) while implementing the broader organizational structure and growth. ■

“When it comes to sustainability, everyone has an opinion. Eevery uses the most widely accepted international standards and links results to key metrics like the Global Reporting Initiative. That gives SMEs objective insights into their performance.”

Michiel Slinkert, Founder and Managing Partner at Caple

Interesse?

Eevery is working with Top of Minds to fill this vacancy. To express your interest, please contact Annelijn Nijhuis at annelijn.nijhuis@topofminds.com

