

Vacancy at Whitevision

Chief Technology Officer (CTO)



TOP OF MINDS
Executive Search

Requirements

- Over 10 years of experience
- In senior strategic and technical leadership roles
- Extensive experience integrating multiple software products, platforms and technology teams into one coherent organisation
- Demonstrated success in scaling and professionalizing a technology organization within a fast-growing business
- Hands-on experience with technical due diligence and buy-and-build strategies
- Strong execution focus with the ability to turn strategy into delivery
- Highly effective in stakeholder management at executive and investor level
- An energetic, decisive leader with a pragmatic mindset

📍 Breda



Whitevision is driven by a clear ambition: to eliminate repetitive and low-value work through smart technology. The company develops SaaS solutions for invoice processing and document automation that simplify complex workflows and create space for work that truly matters. The Chief Technology Officer defines and delivers the technological direction that underpins Whitevision's continued growth in both domestic and international markets.

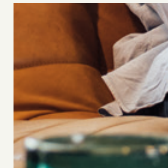
About Whitevision

Repetitive work reduces job satisfaction and limits organizational effectiveness. Whitevision Group addresses this challenge by helping organizations automate document-driven processes. Since its founding in 2005, the company has built a strong technology foundation in invoice processing and document automation, with scalability, reliability, and deep ERP integration as key design principles.

Whitevision is founder-led and, since 2024, majority-owned by Main Capital Partners. The platform is integrated with a broad range of ERP systems through close partnerships. Today, more than 32,000 organizations rely on Whitevision's solutions. Founded in 2005, the platform processes over twenty million documents annually – equivalent to approximately 2.5 million documents per month, more than 125,000 per working day, and nearly four documents per second. From offices in Breda, Zoetermeer, and De Goorn, a team of over 110 professionals work on the continuous development and deployment of Whitevision's intelligent solutions. The culture is shaped by four core values: commitment, ambition, respect, and decisiveness.

National and international growth

With the support of Main Capital Partners, Whitevision is entering an accelerated growth phase. By 2030, the company aims to process one hundred million documents fully automatically and establish a leading position in the Intelligent Document Processing (IDP) market across Europe and the United States. Growth is fueled by an active buy-and-build strategy, an approach for which Main Capital is widely recognized. Within this context, Whitevision appoints an entrepreneurial CTO who helps scale the organization and further strengthen its technology platform.





Chief Technology Officer (CTO)

As Whitevision's technological leader, the Chief Technology Officer (CTO) shapes and safeguards the tech strategy, closely aligning it with the company's commercial and strategic goals. They translate technological innovation and market developments into clear architectural and product decisions, creating scalable, future-ready solutions. As a member of the executive team, the CTO acts as a trusted advisor, offering a clear vision and a well-defined roadmap, maintaining continuous attention to security and compliance.

In an environment marked by rapid growth and frequent acquisitions, the CTO steers the development of an integrated and flexible technology landscape. Designed to enable continuous innovation, including AI adoption, the platform remains robust and scalable over the long term. The CTO's leadership style is communicative and focused on bridging technology and business, ensuring alignment across disciplines.

The CTO steers a 25-strong R&D team and a two-person Product team, driving performance while nurturing their professional growth. Collaboration with external development partners in Rotterdam, the Philippines, and Romania is an integral part of the role, with a strong, relentless focus on quality, craftsmanship, and cross-team collaboration. As an energetic leader, the CTO sets clear direction and coaches teams to perform at a high level, in line with Whitevision's ambitious and action-oriented culture. Striking a balance between technical depth and people leadership is essential.

Additionally, the CTO plays a key role in Whitevision's acquisition strategy. In partnership with a specialized agency, technical due diligence is conducted to assess architecture, code quality, integration potential, and related risks. Post-acquisition, the CTO oversees the integration of R&D teams and technology stacks, aligning products and processes to establish a cohesive and scalable platform.

“ *This role blends strategic vision with operational drive. By directly linking technology decisions to business objectives, you make a tangible contribution to the professionalization, scalability, and continued growth of Whitevision Group.*”

▪ **Frank de Wit, CEO**

A strong fit for this role is a CTO who thrives in a fast-growing SME environment while also feeling at home in a private equity-backed setting with a strong focus on expansion. This candidate moves effortlessly between strategy and execution, communicates clearly with executive leadership and stakeholders, and makes complex technological choices easy to understand. Technology is always viewed through a business lens, with a sharp understanding of where it creates value and how that value becomes visible across the organization.





Interested?

Whitevision is working with Top of Minds to fill this vacancy.
To express your interest, please contact Duco Nijpels at
duco.nijpels@topofminds.com



TOP OF MINDS
Executive Search